

## EPA Water Quality Monitoring Program for Okehampton Bay

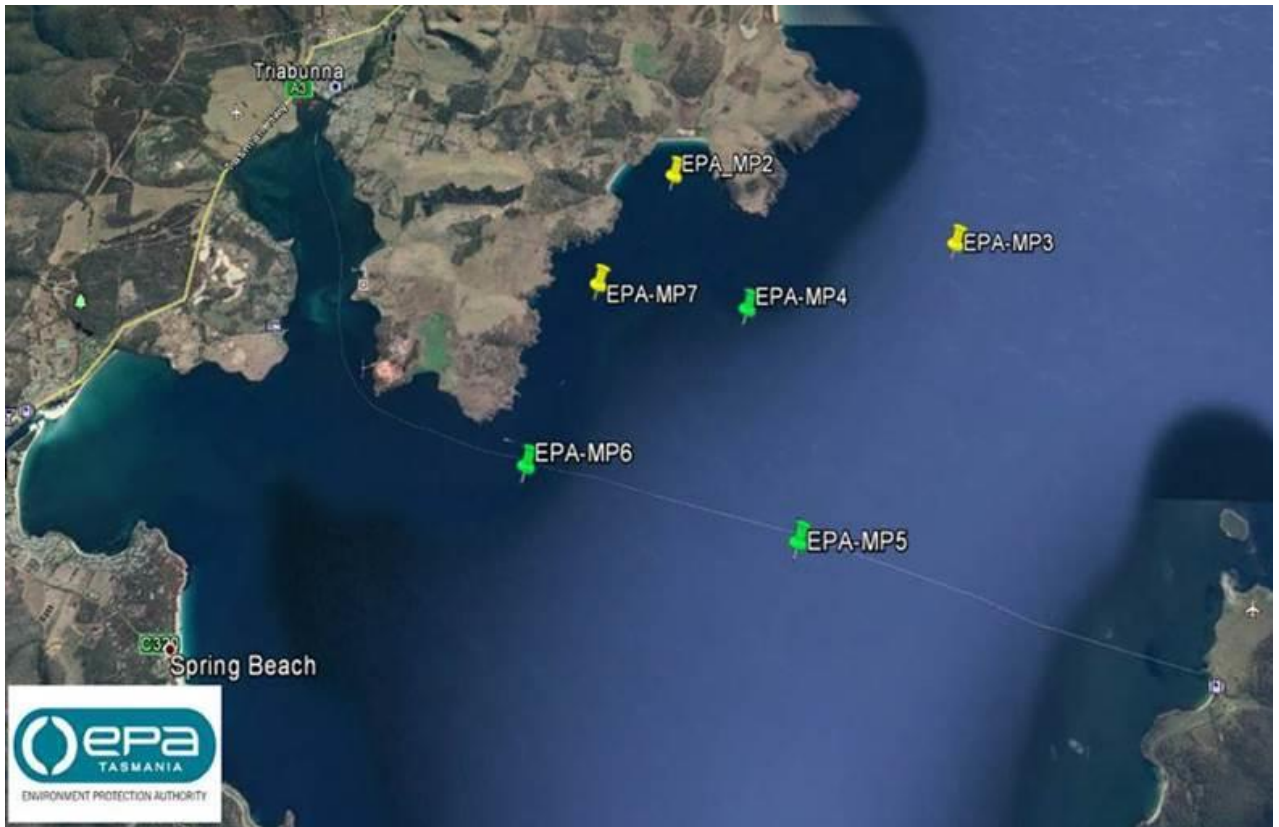
The Environmental Protection Authority (EPA) is conducting an ambient water quality monitoring program in relation to the Okehampton Bay marine farm. The purpose is to:

- provide additional baseline monitoring information for the region
- validate data collected by (or on behalf of) Tassal as required under their marine farm licence
- provide additional information to better inform the understanding of water quality fluctuations in Mercury Passage in the vicinity of the lease
- provide data for input into future nutrient dispersion modelling.

This monthly sampling program commenced prior to the lease being stocked with fish, with the first sampling event on 21 August 2017. The duration of the current program is 12 months, with the possibility of extension subject to review.

**Table 1. Overview of ambient monitoring locations**

Site ID / Name	Location	Easting	North ing	Types of water quality monitoring required	Distance from lease boundary	Where monitoring same site as Tassal under Licence #236
EPA-MP2	Okehampton Bay	580316	5291659	Nutrients, phytoplankton, field measurements	~ 300 m (near-scale)	BEMP-MP2
EPA-MP3	North Mercury Passage	584357	5290660	Nutrients, phytoplankton, field measurements	~3.4 km	BEMP-MP3
EPA-MP4	South of Lords Point	581450	5289700	Nutrients, phytoplankton, field measurements	~ 1km	n/a
EPA-MP5	Mid Mercury Passage	582200	5286700	Nutrients, phytoplankton, field measurements	~3.8 km	n/a
EPA-MP6	Off Point Home	578645	5287600	Nutrients, phytoplankton, field measurements	~2.9 km	n/a
EPA-MP7	South of lease area	579367	5290031	Nutrients, phytoplankton, field measurements	~500 m	BEMP-MP7



**Figure I. Site map of EPA monitoring locations**