

— GUIDELINE —

**The discharge of sewage from certain
vessels into State Waters**

***Derwent, North West Bay, Frederick
Henry Bay, Norfolk Bay, Forestier Coast
to Mercury Passage***

***This guideline is to be read in conjunction with the Sewage
Management Directive made, on 18 December 2013, in
accordance with section 25CC of the Pollution of Waters by
Oil and Noxious Substances Act 1987***

GUIDELINE - The discharge of sewage from certain vessels into State Waters
Derwent, North West Bay, Frederick Henry Bay, Norfolk Bay, Forestier Coast to Mercury Passage

*This guideline is to be read in conjunction with the Sewage Management Directive made, on 18 December 2013,
in accordance with section 25CC of the Pollution of Waters by Oil and Noxious Substances Act 1987*

ENQUIRIES

EPA Division
Department of Primary Industries, Parks, Water and Environment
GPO Box 1751
Hobart
Tasmania 7001

Telephone: (03) 616 54 599
Fax: (03) 6233 3800
Email: EPAEnquiries@environment.tas.gov.au

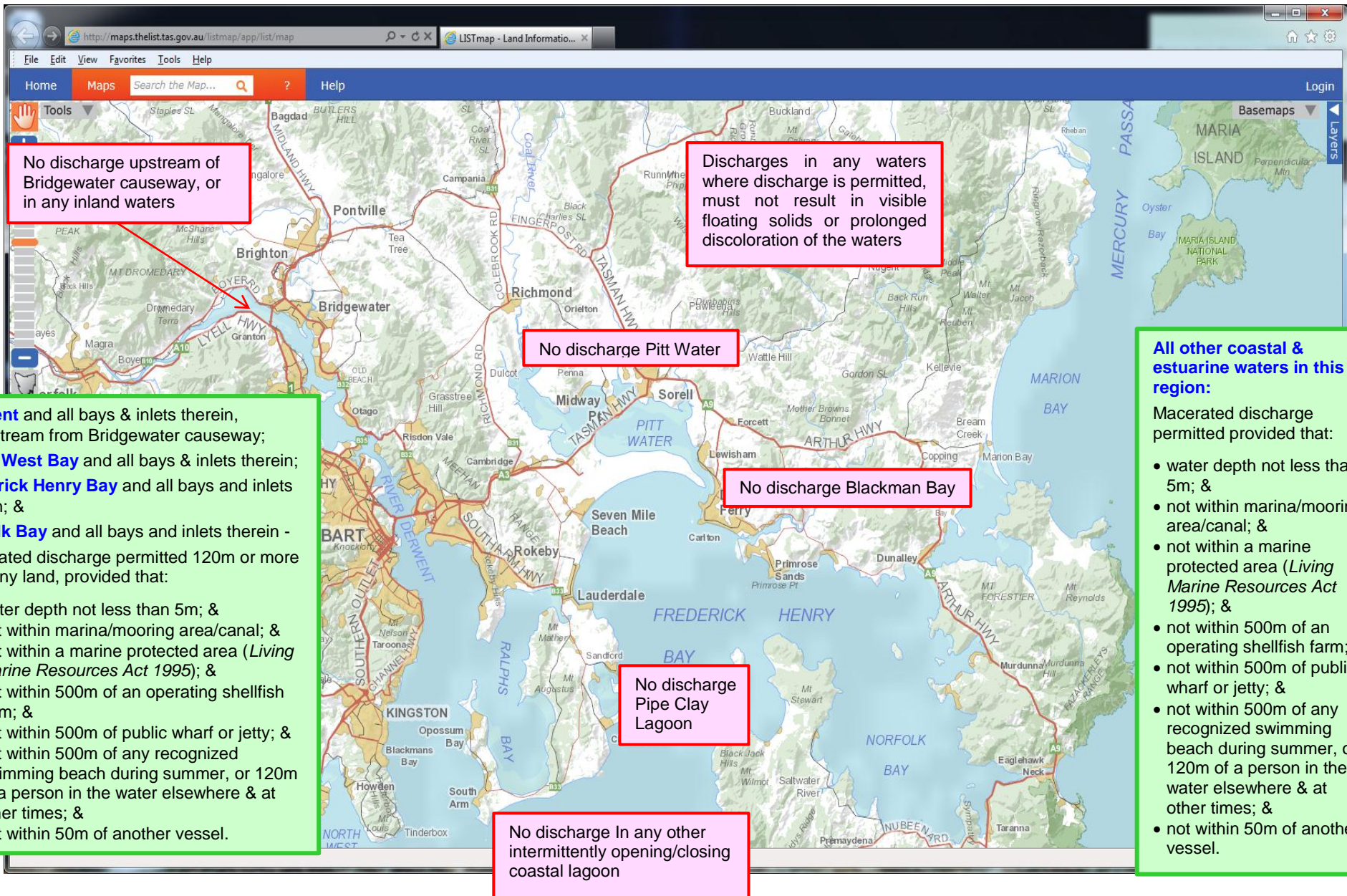
Web: www.epa.tas.gov.au

Recommended citation: EPA Tasmania (2014) Guideline – The discharge of sewage from certain vessels into State Waters (*Derwent, North West Bay, Frederick Henry Bay, Norfolk Bay, Forestier Coast to Mercury Passage*), Published on behalf of EPA Tasmania by the EPA Division, Department of Primary Industries, Parks, Water and Environment, Tasmania.

Disclaimer

The information provided in this document is provided in good faith. The Crown, its officers, employees and agents do not accept liability however arising, including liability for negligence, for any loss resulting from the use of or reliance upon the information in this report and/or reliance on its availability at any time.

**Discharge of sewage that is not disinfected from vessels carrying less than 16 persons until November 2018 – PART 2 of the Directive; AND
Discharge of disinfected sewage from vessels carrying less than 16 persons from commencement onwards– PART 5 of the Directive.**



No discharge upstream of Bridgewater causeway, or in any inland waters

Discharges in any waters where discharge is permitted, must not result in visible floating solids or prolonged discoloration of the waters

No discharge Pitt Water

No discharge Blackman Bay

No discharge Pipe Clay Lagoon

No discharge In any other intermittently opening/closing coastal lagoon

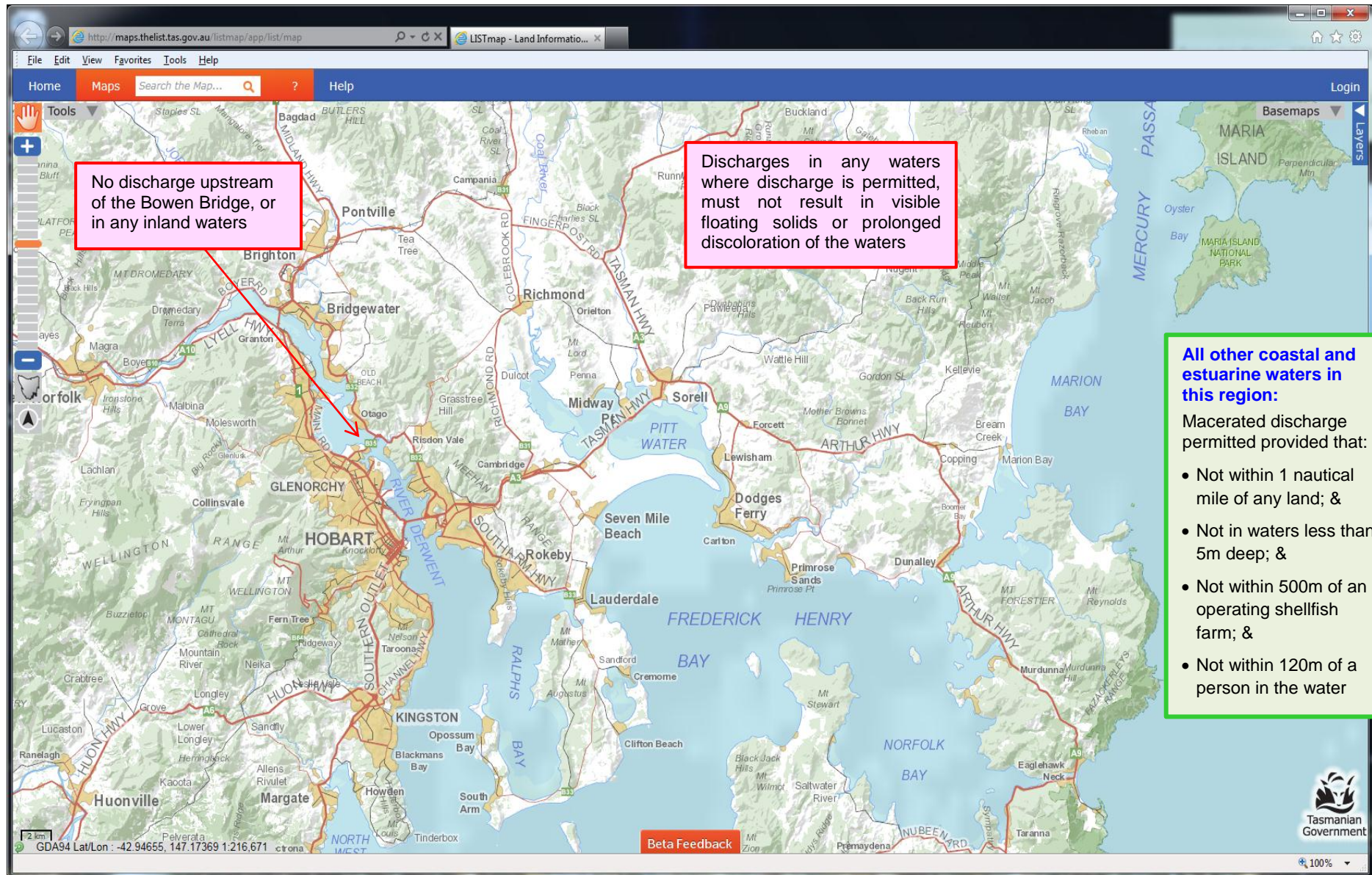
Derwent and all bays & inlets therein, downstream from Bridgewater causeway;
North West Bay and all bays & inlets therein;
Frederick Henry Bay and all bays and inlets therein; &
Norfolk Bay and all bays and inlets therein -
 Macerated discharge permitted 120m or more from any land, provided that:

- water depth not less than 5m; &
- not within marina/mooring area/canal; &
- not within a marine protected area (*Living Marine Resources Act 1995*); &
- not within 500m of an operating shellfish farm; &
- not within 500m of public wharf or jetty; &
- not within 500m of any recognized swimming beach during summer, or 120m of a person in the water elsewhere & at other times; &
- not within 50m of another vessel.

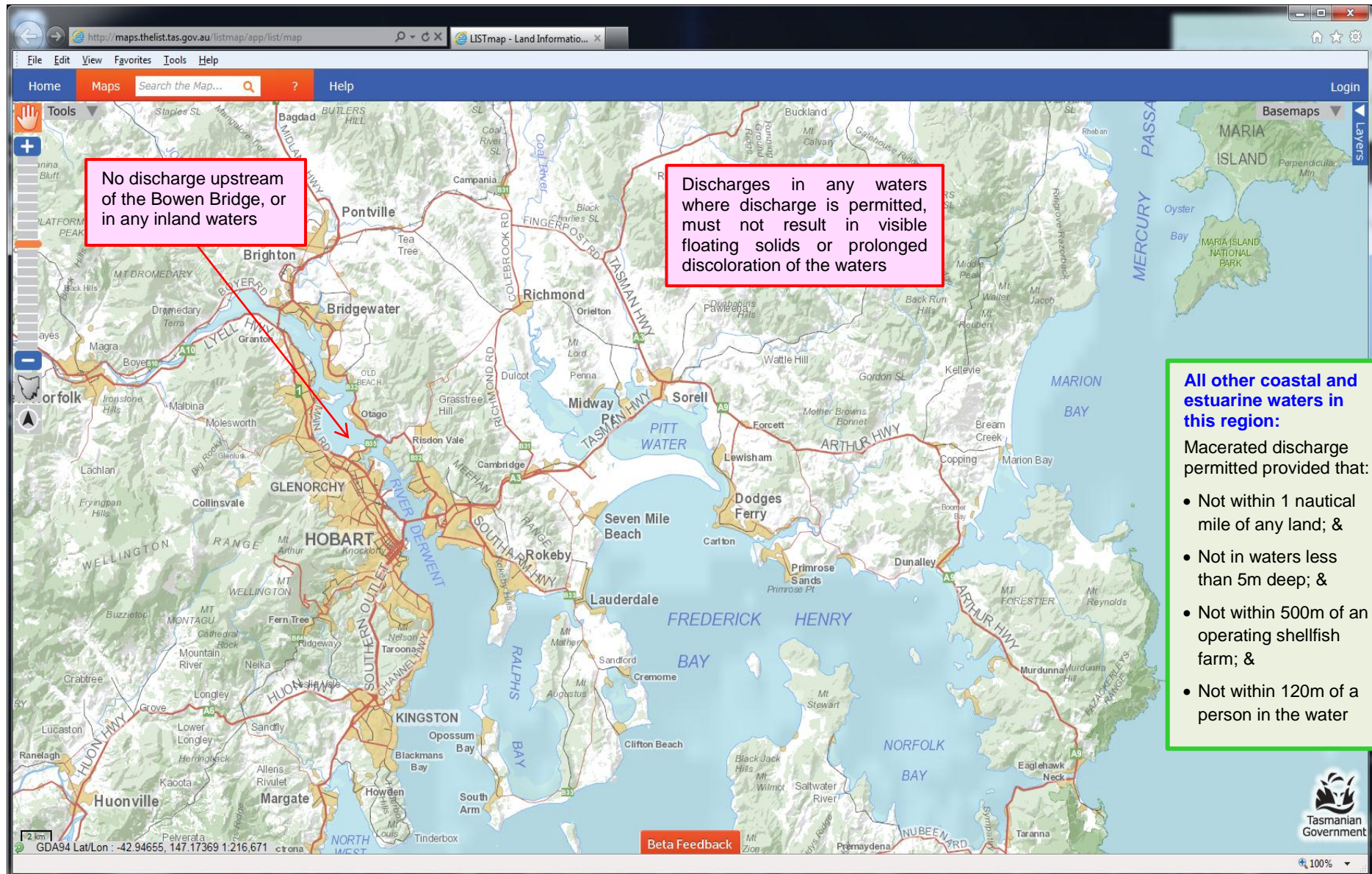
All other coastal & estuarine waters in this region:
 Macerated discharge permitted provided that:

- water depth not less than 5m; &
- not within marina/mooring area/canal; &
- not within a marine protected area (*Living Marine Resources Act 1995*); &
- not within 500m of an operating shellfish farm; &
- not within 500m of public wharf or jetty; &
- not within 500m of any recognized swimming beach during summer, or 120m of a person in the water elsewhere & at other times; &
- not within 50m of another vessel.

Discharge of sewage that is not disinfected from vessels carrying less than 16 persons from November 2018 – PART 3 of the Directive;



Discharge of any sewage from vessels carrying 16 or more persons from commencement onwards– see PART 4 of the Directive





ENVIRONMENT PROTECTION AUTHORITY

