

Figure 2 location of Simplot Ulverstone facility (outlined in red)

3. Background to the project, including details of the proponents' experience and financial capacity to undertake the project and his, her or its contact details.

Project background

The Facility processes approximately 300,000 tonnes of potatoes per annum across two French fry lines and a Value Added (VA) line. Potatoes are delivered by road, unloaded and held in storage in a total of 14 long-term and 4 short-term storage sheds. Potatoes are transferred on demand from trucks and from the storage sheds to the main French fry lines. The potatoes are washed, peeled, inspected and fed to cutters to make potato strips. The strips are blanched, dried and par-fried before being frozen, graded and packaged. Potato nubbins, slivers and small off cuts are processed via the VA line into Potato Gems, and Hash Browns. Starch is recovered from the process water.

The project will not change the use of the site and the Facility will remain consistent with its current zoning; i.e. there will be no change to the operation of the Facility as a result of the proposed WWTP operation and it will continue to process approximately 300,000 tonnes of potatoes per annum. There may be some disruption to onsite operations as the proposed WWTP is constructed and then commissioned but these impacts are localised and readily manageable.

During processing, the Facility uses on average 5.5 megalitres (ML) of water per day, with an average discharge of 5.5 ML/day to trade waste. Wastewater is currently pretreated in the onsite WWTP and discharged under a Trade Waste Agreement (TWA) with TasWater (24/26129, executed July 2025). The wastewater receives no further treatment after leaving the Facility and is discharged to the TasWater owned and operated pumpstation, where it is combined with discharge from the TasWater Knights Road Sewage Treatment Plant (STP) and pumped via the TasWater owned and operated pipeline (TasWater Pipeline) to the marine outfall, located approximately 1 kilometre (km) off the coast of West Ulverstone (TasWater Marine Outfall). **Figure 3** shows the Simplot Ulverstone Pretreatment System and the general alignment of the pipeline as it crosses the River Leven. **Figure 4** shows the general alignment of the TasWater Marine Outfall pipeline

Under the TWA, Simplot is required to upgrade the Facility's current WWTP by December 2027. Simplot proposes to complete the upgrade and discharge the Facility's wastewater under a revised Environmental Protection Notice (EPN) with the Tasmanian Environmental Protection Authority (EPA) at which time the existing TWA with TasWater would end. An agreement with TasWater will be required for the use of the TasWater Pipeline to convey treated wastewater to the TasWater Marine Outfall. The details of this agreement are still being worked through, and it should be noted that the final outcome of these negotiations may influence the type and scale of the proposed WWTP and its detailed technical specifications.

The Facility currently operates as an existing activity under EPN 7373/2 with a commitment of an Annual Environmental Review (AER). The AER reviews compliance of activities within the facility for issues that include water effluent, energy, waste management, incident management, noise and legal obligations.



Figure 3 – Simplot Ulverstone Wastewater pretreatment system



Figure 4 – General alignment of TasWater outfall pipeline

Simplot’s capacity to deliver the project

Simplot Australia Pty Ltd (Simplot) is a fully owned subsidiary of the Simplot Company which is a family owned and privately held company since 1929. The company’s integrated portfolio includes farming, ranching and cattle production, food processing, food brands, phosphate mining, fertiliser manufacturing, and other enterprises related to agriculture. Its major operations in the U.S., Canada, Mexico, Australia, Argentina, India, China and Europe provide a diverse array of products and services to people around the world. Within Australia, Simplot is one of the largest operators of food processing facilities, with major processing facilities in Bathurst and Kelso in New South Wales, Echuca in Victoria, and then Devonport and Ulverstone in Tasmania.

The project is in the Simplot capital plan and includes a multi-year budget that is required to complete the project.

Simplot has significant experience in building and operating wastewater treatment plants at sites in the U.S., Canada, Mexico, Argentina and India; this includes a zero discharge plant in India, and facilities that discharge to freshwater rivers in Oregon (U.S.) and Canada. In addition, Simplot has recently completed significant process equipment upgrades at the Bathurst, Kelso, Echuca and Devonport facilities.

Simplot has a proven track record of environmental assessment and management in Tasmania:

- Process upgrades at the Devonport facility (situated in the suburb of Quoiba) were assessed by the Tasmanian EPA via a comprehensive Environmental Impact Statement (EIS) prepared at the time to achieve the project-specific 'Environmental Impact Statement Guidelines' for those upgrades (Class 2B assessment). The EIS was accepted, and the proposed upgrades were consequently approved, by the Tasmanian EPA as reflected in the 'Environmental Assessment Report - Capacity Upgrade to Vegetable Processing Facility - Quoiba - Simplot Australia Pty Ltd', dated 18 October 2024.
- Similarly, the Ulverstone facility itself recently received approval for the installation of a Wet Electrostatic Precipitator (WESP) at the site, as assessed by the Tasmanian EPA via an Environmental Effects Report prepared at the time to achieve the project-specific 'Environmental Effects Report Guidelines' for those upgrades (Class 2A assessment). The EER was accepted, and the proposed upgrades were consequently approved, by the Tasmanian EPA as reflected in the 'Environmental Assessment Report - Simplot Australia Pty Ltd - Installation of a Wet Electrostatic Precipitator (WESP) - 8 Jetty Street, Ulverstone', dated 9 May 2025.

Operation of both the Simplot Devonport and Ulverstone facilities continue with the above-mentioned upgrades now forming part of day-to-day business, and environmental management and reporting occurring under each respective EPN.

4. A description of the proposed project, including its key physical components

The project will involve the installation of an aerobic biological treatment system configured to operate as a biological nutrient removal (BNR) system. Proposed design parameters for discharge to the marine environment are listed within **Table 1**.

Organics and nutrients will be removed via biological processes which convert these compounds into particulate biomass. The biomass is separated from the liquid stream via gravity clarifiers or membranes in a membrane bioreactor (MBR) process. Biosolids will most likely be dewatered and disposed to landfill or fed to cattle. The treated wastewater is proposed to be discharged to the TasWater Pipeline for conveyance to the TasWater Marine Outfall.

Table 1 – Proposed design parameters for discharge to marine environment

Parameter	Units	Monthly Average Limit ¹	Type of Sample
Temperature	C	<45	Continuous
pH	s.u.	6.0 - 9.0	Grab
BOD ₅	mg/L	35	24-hr Composite
TSS	mg/L	30	24-hr Composite
Oil & Grease	mg/L	10	Grab
Ammonia	mg/L	5	24-hr Composite
NO ₃ /NO ₂	mg/L	50	24-hr Composite
Phosphorus	mg/L	40 ³	24-hr Composite
E. coli ²	CFU/100 mL	630	Grab
Total Chlorine Residual	mg/L as Cl ₂	5	Grab

1. Arithmetic mean of all daily discharge values for a parameter measured during a calendar month.
2. E. coli limit to be the geometric mean of all daily discharge values for the parameter measured during a calendar month.
3. Listed as the starting phosphorus concentration in the potato processing wastewater. Reduction of phosphorus concentrations via chemical precipitation limit the beneficial biosolids reuse options, increases the total waste solids volumes significantly, and causes increased reactor sizing to accommodate solids recirculation within the wastewater treatment system. Biological phosphorus removal will be designed into the system, but its intermittent reliability with variable wastewater feed at potato processing facilities causes the need to provide redundant chemical precipitation provisions if a lower limit is included.

The following is a list of the major unit processes for the project:

- Existing pretreatment processes – mud settling, screening, primary clarification, oil removal
 - Dissolved Air Flotation (DAF) – For enhanced oil removal.
- Biological Nutrient Removal System:
 - Anaerobic Fermenter – Above grade bolted steel tank with floating mixer. Purpose: biological phosphorus removal.
 - Anoxic Tank – Above grade bolted steel tank with floating mixer. Purpose: biological Nitrate removal.
 - Aeration Tanks – Above grade bolted steel tanks. Purpose: BOD removal.
 - Fine Bubble Diffusers – Purpose: oxygen addition to drive biological processes.
 - Aeration Blowers – Purpose: supply air to aeration tanks for mixing and provide oxygen to the biomass.
 - Secondary Clarifiers/UF Membranes – Above grade bolted steel tanks with rotating mechanism or ultrafiltration pressure driven porous membranes. Purpose: solids separation from the liquid stream.
- UV disinfection system – Purpose: disinfection and E. coli inactivation.
- Biosolids dewatering – Purpose: reduce hauled water associated with the biomass during reuse or disposing.

A simplified block flow diagram (BFD) of the processing facility proposed WWTP, and TasWater Marine Outfall is provided in **Figure 5**. A BFD of the proposed biological treatment system (which is a component of the overall system shown in **Figure 5**) is provided in **Figure 6**.

Figure 5. BFD of Overall System –Activated Sludge Biological Treatment with discharge to TasWater Marine Outfall . New WWTP installation in red.

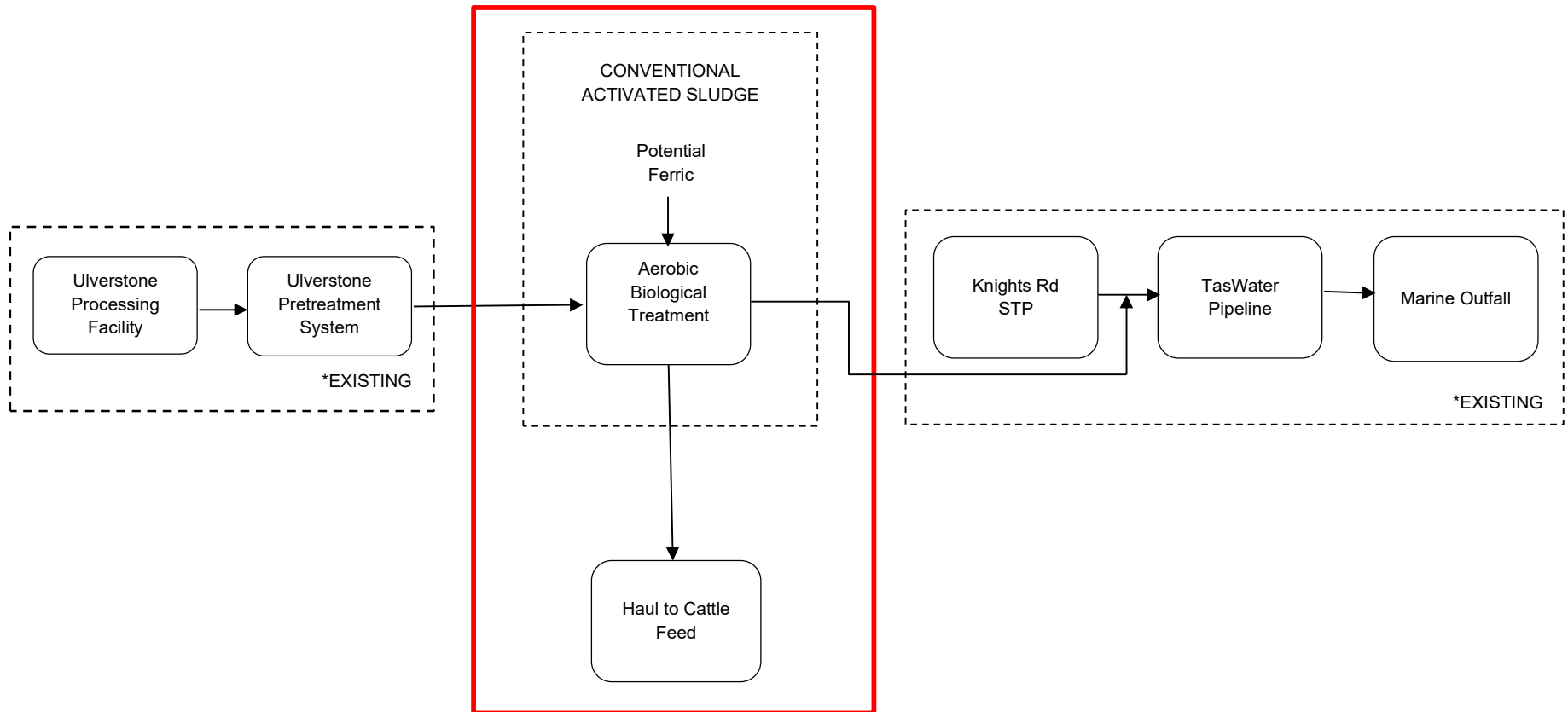
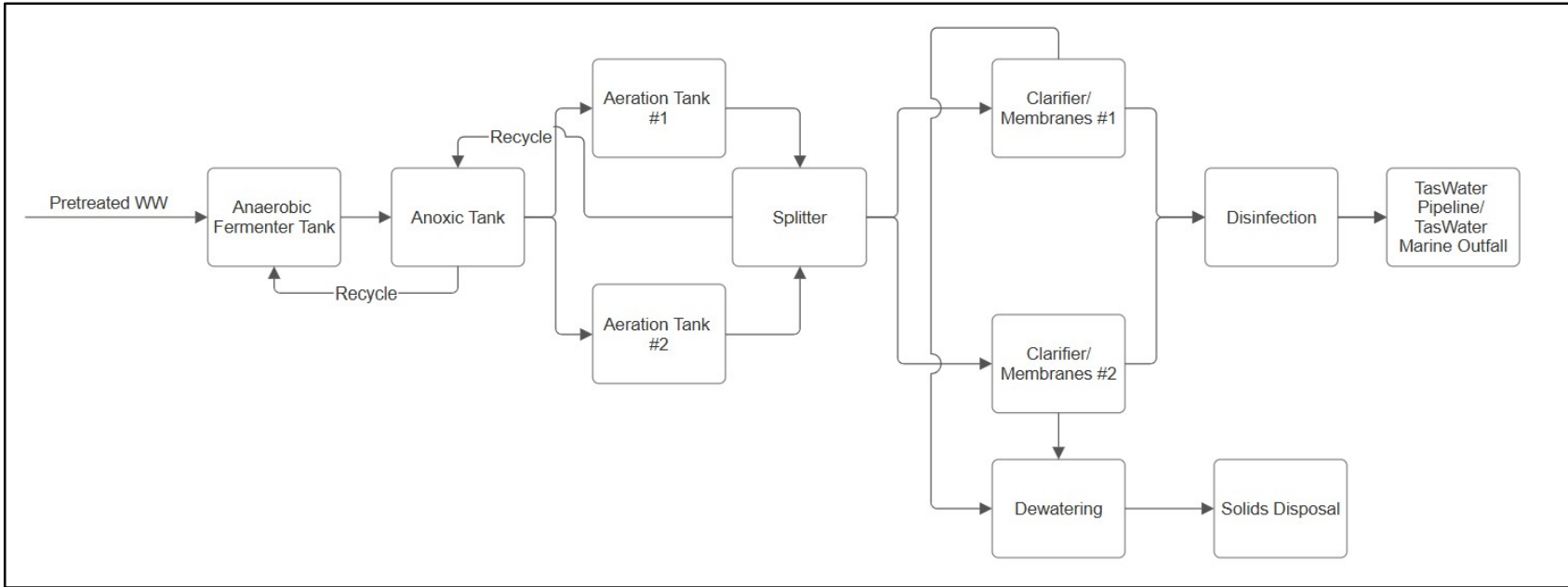


Figure 6. BFD of New Aerobic Biological Treatment System to Meet Marine Outfall Limits



5. An outline of the proposed project and general site location map

The project will involve:

1. Demolition, construction/installation and commissioning works to upgrade the existing WWTP
2. Demolition and site establishment works associated with the potato storage shed to allow for the additional footprint required for the project.
3. Additional works proposed to be undertaken in the existing location of the potato storage shed adjacent to the existing WWTP.



Figure 8 – Simplot Ulverstone WWTP upgrade proposed project footprint

The intent of the proposed project is to enable ongoing long-term operation of the Facility, and there are no current plans for any (on-going, staged or otherwise) site decommissioning and rehabilitation throughout the project life.

6. An outline of the stakeholder consultation process undertaken, or proposed to be undertaken, including the consultation method, stakeholders consulted or to be consulted and the issues raised or to be raised

The following consultation methods will be undertaken throughout the delivery of the project:

- Project information to be provided on Simplot Australia website.
- Community notification to proximal commercial, industrial and residential neighbours at key project milestones.
- Face-to-face consultations with key stakeholders (noted below), and with proximal neighbours as required.
- Advertising in local publications as required by the Land Use Planning and Approvals Act 1993 , Tasmanian Planning Scheme and EPA assessments process.

- The Facility's complaints register required under Condition G5 of EPN 7373/2 will also be used throughout the delivery of the project.

Regular consultation is currently occurring between Simplot and TasWater on the proposed project, including negotiation of a pipeline agreement, and regular consultation will continue throughout the project. Other key stakeholders that will be consulted include, but are not limited to, the Tasmanian EPA, Central Coast Council and TasNetworks.

7. A general description of the physical environment that may be affected by the project

The Facility is generally surrounded by a mix of commercial and residential properties. It is situated in an area zoned General Industrial, with areas to the north-east, east and southeast zoned Light Industrial, General Residential to the north, and Open Space to the south and west. The site is bordered on the west by the Leven River, and to the south by Masons Creek. Between the site boundary and Leven River (to the west and north with regard to the project) is a patch of what appears to be remnant native vegetation, approximately 30-35 metres in width. The Bass Highway is to the South of Masons Creek.

Construction will be undertaken within the site boundaries, and at this stage it is not expected there will be any temporary impacts beyond the site boundary. Operation of the project will occur wholly within the site boundary and any permanent impacts beyond the site boundary are unlikely to occur. The final outcome of the pipeline agreement negotiations with TasWater may influence works, and the requirement for works beyond the site boundary.

It is expected the receiving environment at the TasWater Marine Outfall will be positively affected by the improvement in wastewater quality. These outcomes will be assessed as part of the EIS.

8. The key environmental, health, economic and social issues identified for the project to date.

The following two (2) key issues have been identified for the proposed project.

- Environmental:
 - Water quality (surface and discharge) - the project will deliver considerable improvement to wastewater quality discharged from the Facility, with subsequent improvement to water quality at the receiving environment. Qualifying this and addressing stormwater aspects of the project will be a key consideration throughout the project.
 - Noise emissions – the site is located close to residential properties. Noise management and mitigation will be a key consideration

throughout the project, along with future noise emissions from the upgraded WWTP.

In addition to the two (2) key issues identified above, the following environmental, social and health matters have been identified for further consideration during the EIS, noting that impacts associated with these matters will be thoroughly addressed but are unlikely to have a significant negative impact.

- Environmental:
 - Water quality (groundwater) – to be considered with other water aspects, but interactions with groundwater are unlikely.
 - Air quality (incl. odour and dust) – Air quality is not expected to be impacted from the project. Potential odour and dust issues will be investigated during the EIS, and any dust generated during construction will be mitigated using standard construction mitigation measures.
 - Waste – waste generated by the project will be managed in accordance with the site Waste Management Plan and follow the hierarchy of waste management.
 - Biodiversity and Natural Values – the project involves no vegetation clearance, minimal ground disturbance, and therefore no or limited direct impacts on biodiversity values are expected. It is expected biodiversity values will improve in the wastewater receiving environment. Indirect impacts on biodiversity values are unlikely to be significant but will be investigated further in the EIS.
 - Carbon Emissions – the project may result in increased energy use and resulting carbon emissions. Simplot has a program of works in place to reduce total emissions from all sites.
 - Hazardous materials – pending detailed engineering design, chemicals such as coagulants, flocculants, polymers, and oxidizers/disinfectants are likely to be stored onsite. Diesel may also be stored at the WWTP to power any emergency diesel pumps.
- Socio-economic:
 - The Facility contributes over \$200 million to the local economy and employs over 300 people. The project is required to continue operations at the Facility.
 - The project will employ local contractors and consultants where possible.
- Health:
 - Traffic impacts, both during construction and operation, will be assessed during the EIS
 - Simplot maintains high standards for Health, Safety and Wellbeing, during both normal operations and major projects. Project risk assessments will be completed during the design, and construction

- phases and appropriate project safety measures will be implemented. This will include assessments for fire risks.
- Public health risks associated with the wastewater discharge from the Facility will be significantly reduced.

The potential impacts of the two (2) key issues (and other environmental matters) noted above, along with the requirement for avoidance and mitigation, will be further assessed through the planning and design process, and as part of the EIS.

All works will be managed in accordance with relevant legislation, regulations, existing company policies and procedures, and EPN 7373/2. Simplot Ulverstone has an Environmental Management System (EMS) in place that is certified to ISO14001.

As noted above, there are no current plans for any (on-going, staged or otherwise) site decommissioning and rehabilitation throughout the project's life. This would be addressed within the EIS and a high-level plan for decommissioning provided, the EIS would not however include a detailed decommissioning and rehabilitation plan, or any closure plan. These plans would only be prepared when relevant to do so i.e. when decommissioning and rehabilitation, or closure of the Facility is identified by Simplot.

9. The surveys and studies proposed or underway in relation to the key issues for the project

As a minimum, the following two (2) key issues would be assessed via stand-alone technical studies that would be undertaken by suitably qualified specialists. These studies would include surveys where required, and as deemed necessary by the specialist and with due regard to relevant standards, policy and guidelines:

- Water quality (surface and discharge) – wastewater quality, and impacts on the receiving environment, along with stormwater
- Noise emissions

The EIS will then provide for a series of qualitative assessments of the other environmental, social and health matters identified above, including but not limited to: water (groundwater), air quality / odour / dust, waste, biodiversity and natural values, carbon emissions, socio-economic and health. Should the planning and design process identify an increase in risk associated with any of these matters, additional technical studies would be considered as part of the EIS.

Air emissions surveys have been completed following the installation of the Wet Electrostatic Precipitator (WESP) on site. Air quality will continue to be monitored as per the conditions of the WESP installation.

The EIS would then describe any existing monitoring that is occurring at the site, additional monitoring requirements that needed to augment that already being undertaken and then any new monitoring requirements identified as a result of the EIS.

10. The proposed timetable for the project

Figure 9 shows the proposed high-level timetable for delivery of the upgrade to the Wastewater Treatment Plant. The durations estimated are based on our most recent experience in construction of treatment plants globally. Specific timeframes have not been included at this stage, as these are dependent on the achievement of a pipeline agreement with TasWater. Durations and timeframes will be reviewed and updated throughout the assessments and permitting process.

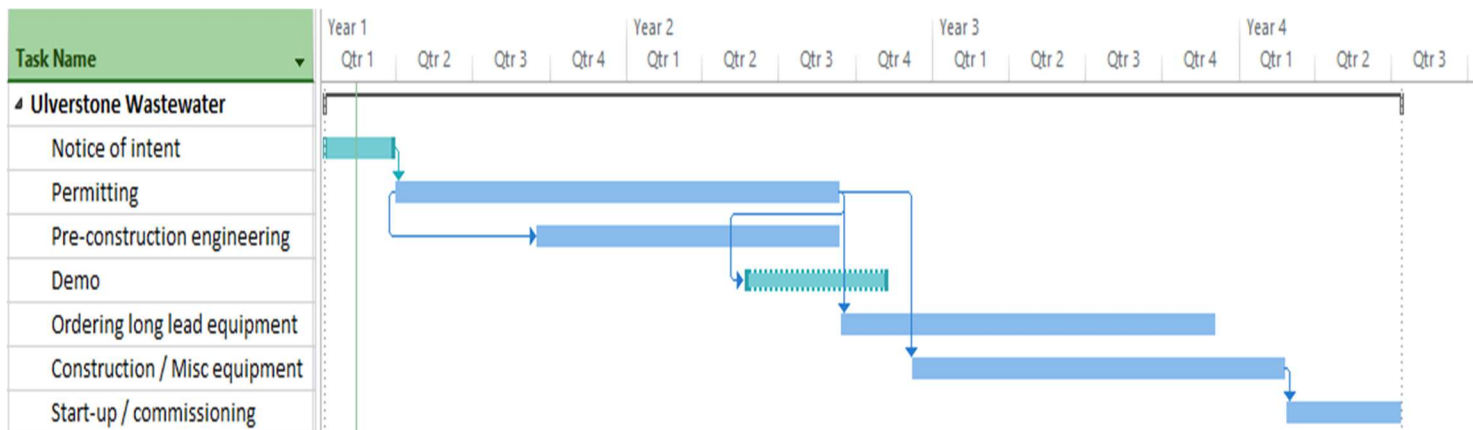


Figure 9 – Proposed project timetable

11. Additional information

i. Requirement for approval under the Environment Protection and Biodiversity Conservation (EPBC) Act

An initial assessment of the requirements for approval under the EPBC Act has been undertaken, however further assessment is required to determine if there is a need to refer the project to the Australian Government under the EPBC Act. This will be undertaken by environmental consultants engaged to complete the EIS.

ii. Status of proposal under the Land Use Planning and Approvals Act 1993 (the LUPA Act)

It is understood that the Central Coast Council will require a LUPA Act permit application. A single Development Application to obtain a Planning Permit is required to be submitted to Central Coast Council for the proposed project, under Section 57 (discretionary permit) of the LUPA Act. The site is zoned general industrial. The project will not change the use of the site and the Facility will remain consistent with its current zoning.

An application for a Planning Permit under the LUPA Act in relation to the proposed project would be submitted and progressed to Central Coast Council at an appropriate time during the planning and design process, and as part, or an outcome of, the EIS.