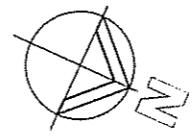
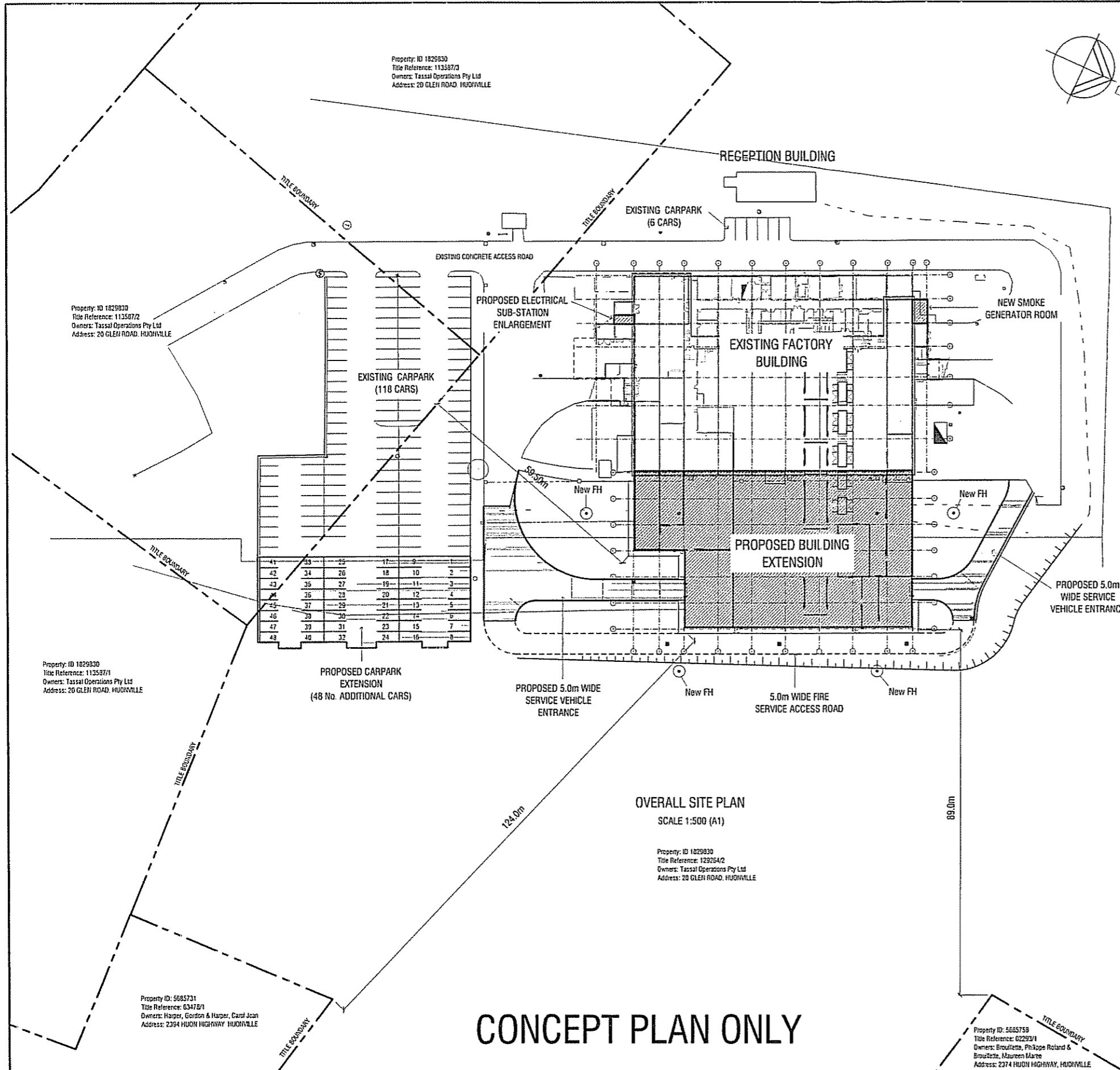


**CONCEPT PLAN ONLY**

REV	DESCRIPTION	APP	DATE	SIGNATURE	DATE	 TASSAL GROUP LIMITED. ACN 106 324 127. 2009 ALL RIGHTS RESERVED.	TASSAL GROUP LIMITED. TASSAL OPERATIONS PTY LTD. ACN 106 324 127 ASN 38 106 324 127 2 SALAMANCA SQUARE, HOBART TAS., 7000 PHONE: 1300 66 0491 FACSIMILE: 1300 88 0179 EMAIL: tassal@tassal.com.au WEBSITE: www.tassal.com.au	PROJECT TASSAL HUONVILLE EXPANSION 20 GLEN ROAD HUONVILLE	TITLE FACTORY EXPANSION  OVERALL SITE PLAN	 STATUS <b>PRELIMINARY</b> NOT TO BE USED FOR CONSTRUCTION SCALE 1:1250 DO NOT SCALE OFF DRAWING DRAWING NO. <b>XXXX-A00</b>	A1
				<table border="1"> <tr> <td>DRAWN</td> <td>PAH</td> <td>08.02.09</td> </tr> <tr> <td>DESIGNED</td> <td></td> <td></td> </tr> <tr> <td>APPROVED</td> <td></td> <td></td> </tr> </table>	DRAWN						
DRAWN	PAH	08.02.09									
DESIGNED											
APPROVED											



**DRAWING INDEX**

DWG. No.	DRAWING TITLE	Rev	Date Issued
<u>ARCHITECTURAL DRAWINGS</u>			
XXXX-A01	DRAWING INDEX / OVERALL SITE PLAN	-	-/-/2009
XXXX-A02	OVERALL FLOOR PLAN	-	-/-/2009
XXXX-A03	FLOOR PLAN - SHEET 1 of 2	-	-/-/2009
XXXX-A04	FLOOR PLAN - SHEET 2 of 2	-	-/-/2009
XXXX-A05	ELEVATIONS	-	-/-/2009
XXXX-A06	FLOOR DRAINAGE	-	-/-/2009
XXXX-A07	EXTERNAL PAVEMENT PLAN	-	-/-/2009

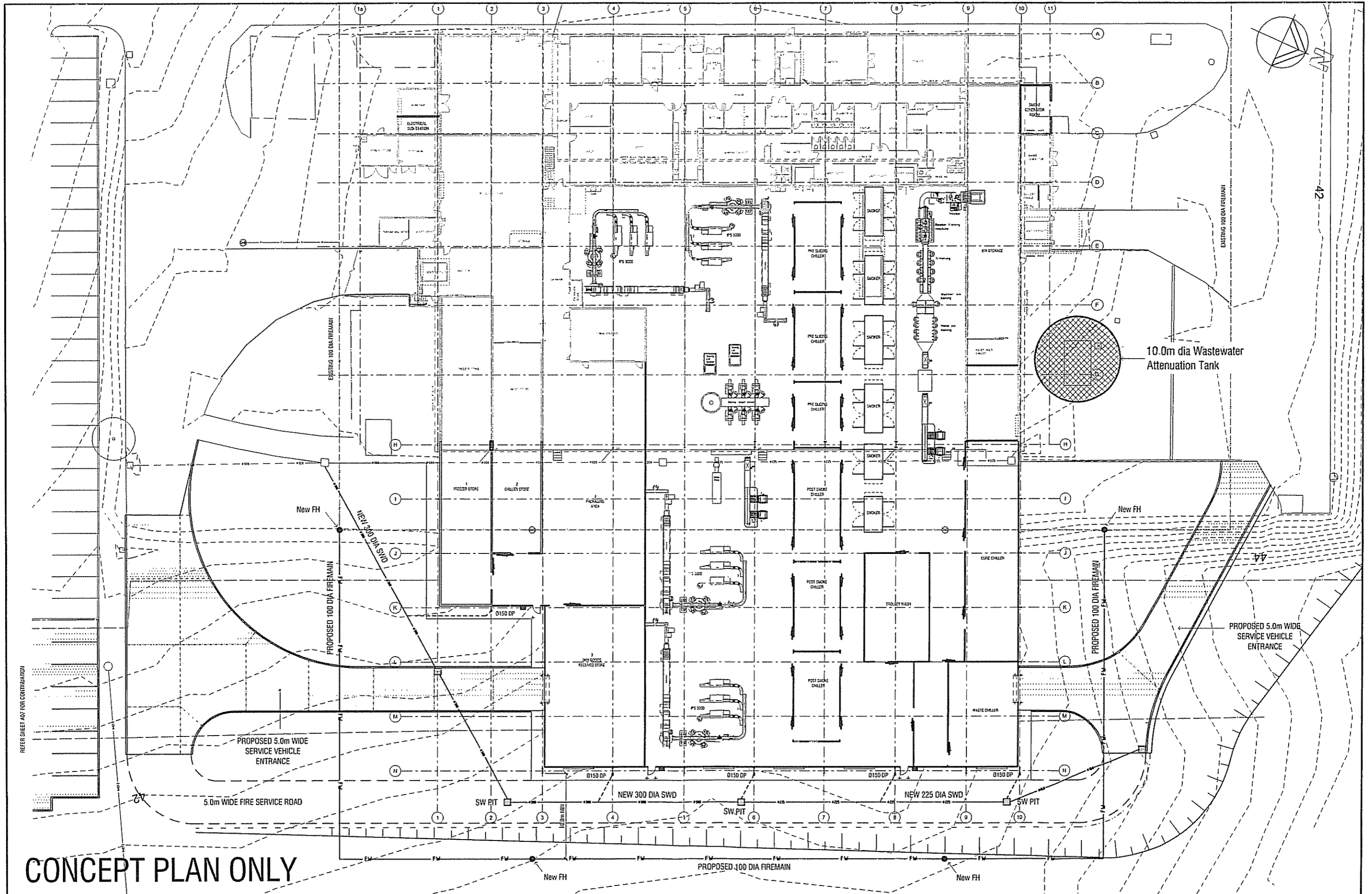
**OVERALL SITE PLAN**  
SCALE 1:500 (A1)

**CONCEPT PLAN ONLY**

**SITE SUMMARY TABLE**

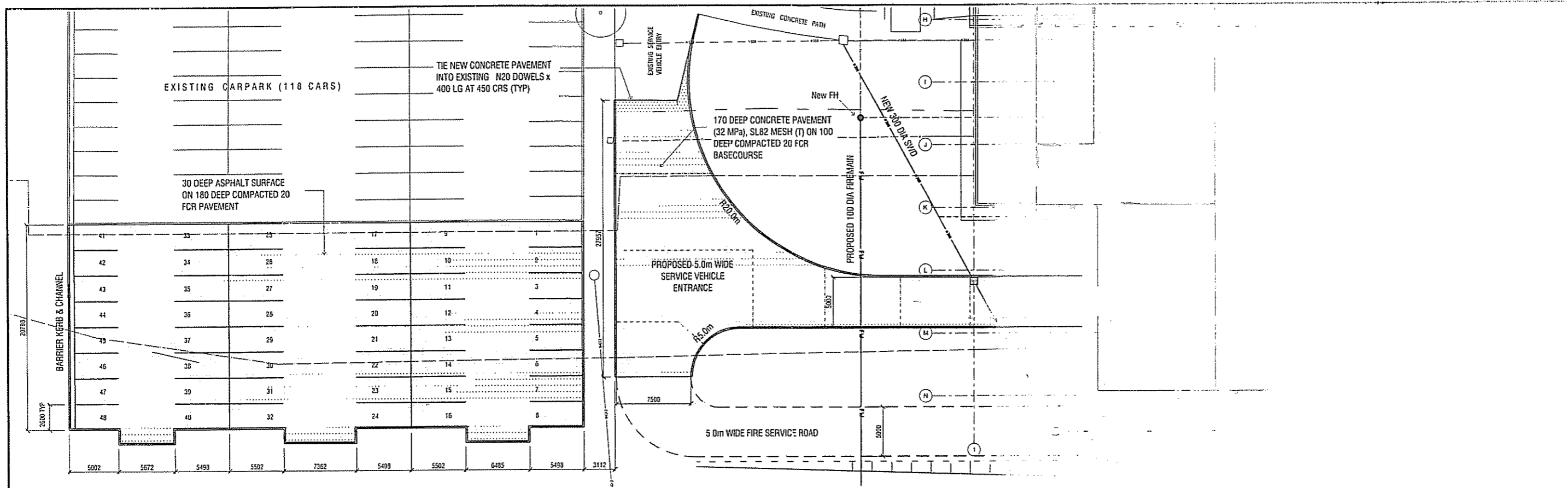
SITE ADDRESS	20 GLEN ROAD, HUONVILLE
OWNERS	Tassal Operations Pty Ltd
TITLE REFERENCES	CT129264/2 Area = 15.52 Ha CT113587/3 Area = 1.003 Ha CT113587/2 Area = 1.003 Ha CT113587/1 Area = 1.828 Ha
SITE ZONING	RURAL INDUSTRY
TOTAL SITE AREA	19.354 Ha
BUILDING FLOOR AREAS	- EXISTING FACTORY 3270m <sup>2</sup> - EXISTING RECEPTION 148m <sup>2</sup> - PROPOSED BUILDING 2350m <sup>2</sup>
TOTAL FLOOR AREA	5768m <sup>2</sup>
CAR PARKING SPACES	- EXISTING SPACES 124 No - NEW SPACES 48 No
TOTAL SPACES	172 No.

REV	DESCRIPTION	APP	DATE	<p><b>tassal</b> PURE TASMANIA</p>	<p>TASSAL GROUP LIMITED. TASSAL OPERATIONS PTY LTD. ACN 106 324 127 ABN 38 106 324 127</p> <p>2 SALAMANCA SQUARE, HOBART TAS. 7000 PHONE: 1300 66 0491 FACSIMILE: 1300 88 0179 EMAIL: tassal@tassal.com.au WEBSITE: www.tassal.com.au</p>	<p>PROJECT TASSAL HUONVILLE EXPANSION 20 GLEN ROAD HUONVILLE</p>	<p>TITLE FACTORY EXPANSION  OVERALL SITE PLAN</p>	<p>STATUS: <b>PRELIMINARY</b> NOT TO BE USED FOR CONSTRUCTION</p> <p>SCALE: 1:500 DO NOT SCALE OFF DRAWING</p> <p>DRAWING NO: <b>XXXX-A01</b></p>	<p>A1</p>
	SIGNATURE	DATE	<p>DRAWN: PAH 08.02.09</p> <p>DESIGNED:</p> <p>APPROVED:</p>						



CONCEPT PLAN ONLY

REV	DESCRIPTION	APP	DATE	SIGNATURE	DATE	 <b>tassal</b> PURE TASMANIA <small>© TASSAL GROUP LIMITED, ACN 106 324 127, 2008 ALL RIGHTS RESERVED</small>	TASSAL GROUP LIMITED. TASSAL OPERATIONS PTY LTD. ACN 106 324 127 ABN 38 106 324 127  2 SALAMANCA SQUARE, HOBART TAS, 7000 PHONE: 1300 66 0491 FACSIMILE: 1300 88 0179 EMAIL: tassal@tassal.com.au WEBSITE: www.tassal.com.au	PROJECT <b>TASSAL HUONVILLE EXPANSION</b> 20 GLEN ROAD HUONVILLE	TITLE <b>FACTORY EXPANSION</b>  <b>OVERALL FLOOR PLAN</b>	 SCALE BAR 1:200 DO NOT SCALE OFF DRAWING	A1 <b>PRELIMINARY</b> NOT TO BE USED FOR CONSTRUCTION <b>XXXX-A02</b>
				DRAWN PAH 08.02.09 DESIGNED APPROVED	DRAWING NO						



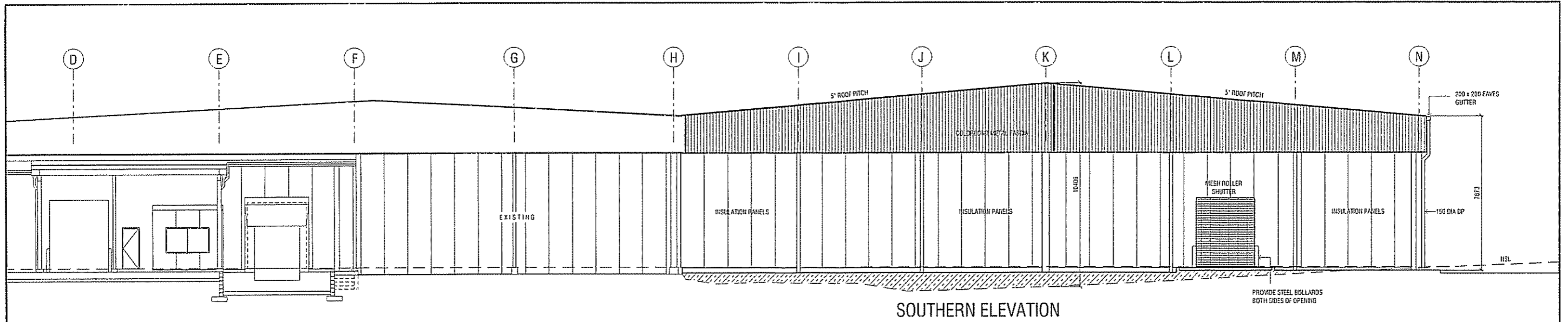
# CONCEPT PLAN ONLY

REFER SHEET A03 FOR CONTINUATION

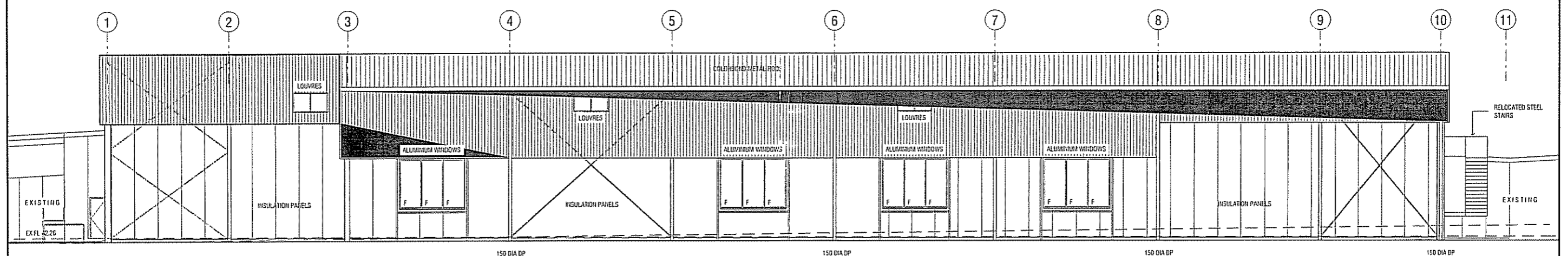
REV	DESCRIPTION	APP	DATE	SIGNATURE	DATE	<p>TASSAL GROUP LIMITED. TASSAL OPERATIONS PTY LTD. ACN 106 324 127 ABN 38 106 324 127</p> <p>2 SALAMANCA SQUARE, HOBART TAS. 7000 PHONE: 1300 66 0491 FACSIMILE: 1300 88 0179 EMAIL: tassal@tassal.com.au WEBSITE: www.tassal.com.au</p>	<p>PROJECT</p> <p>TASSAL HUONVILLE</p> <p>20 GLEN ROAD</p> <p>HUONVILLE</p>		
				DRAWN	PAH				08.02.09
				DESIGNED					
				APPROVED					

**tassal**  
PURE TASMANIA

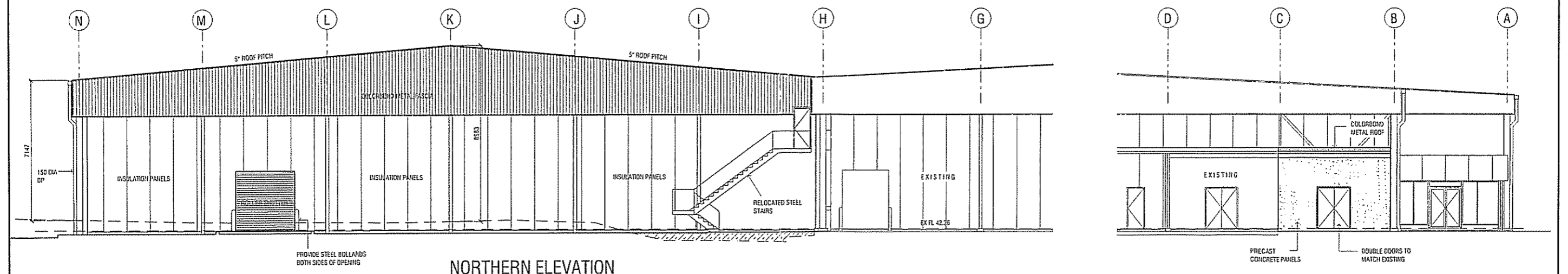
© TASSAL GROUP LIMITED, ACN 106 324 127, 2008 ALL RIGHTS RESERVED.



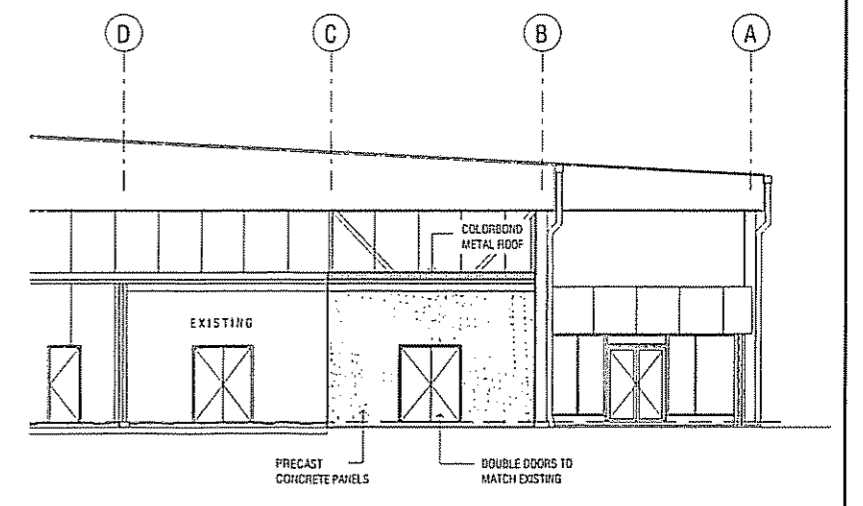
SOUTHERN ELEVATION



EASTERN ELEVATION



NORTHERN ELEVATION



CONCEPT PLAN ONLY

REV	DESCRIPTION	APP	DATE	 PURE TASMANIA	TASSAL GROUP LIMITED TASSAL OPERATIONS PTY LTD. ACN 106 324 127 ABN 38 106 324 127 2 SALAMANCA SQUARE, HOBART TAS. 7000 PHONE: 1300 66 0491 FACSIMILE: 1300 88 0179 EMAIL: tassal@tassal.com.au WEBSITE: www.tassal.com.au	PROJECT TASSAL HUONVILLE EXPANSION 20 GLEN ROAD HUONVILLE	TITLE FACTORY EXPANSION ELEVATIONS	 0 2000 4000 6000 8000 SCALE BAR 1:100 DRAWING NO XXXX-A05	A1 PRELIMINARY NOT TO BE USED FOR CONSTRUCTION DO NOT SCALE OFF DRAWING
		DESIGNED							
		APPROVED							